

HOMES & GARDENS®

The grand tour

DISCOVER THE CHARM OF EUROPEAN LIVING

**NATURAL
BEAUTY**
SECRETS OF A
SENSORIAL
MEDITERRANEAN
GARDEN
**BEAUTIFUL
WATER FEATURES**

ITALIAN FLAIR

MEET THE MAKERS
BEHIND THE CRAFTS

SPOTLIGHT ON
HERITAGE BRANDS

A LUXE HOTEL IN THE
HEART OF MILAN

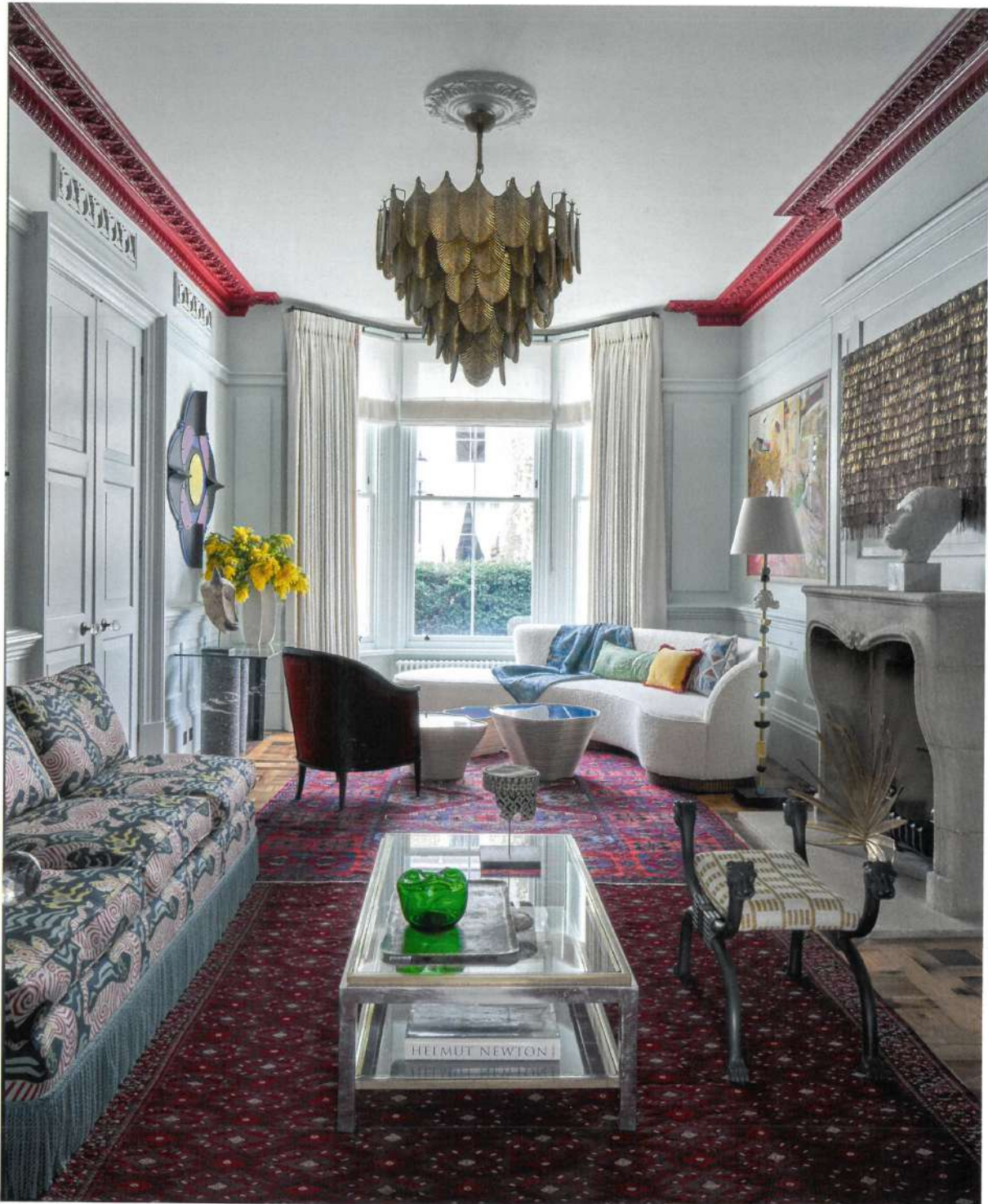
DESIGN NOTES

DECORATING WITH
EMBROIDERY

ELEGANT
MOULDING IDEAS



MAY 2024



BORDER LINE

There are no rules that state that a cornice should fade into the background, particularly when it comes to rooms with grand proportions where there is no risk of creating the feeling of a ceiling that is too low. The caveat with going down this route is to keep in mind the counterbalancing required to make it work. In this scheme, for example, the red cornice is just one of the many talking points. 'The cornice was original in this room in a recent project in Notting Hill,' says Romanos Brihi, co-founder of Studio Vero. 'The choice of colour was a bold decision, which took a little persuading but undoubtedly succeeded in unifying the scheme and creating another element of interest.'

PHOTOGRAPHS (BORDER LINE) SIMON BROWN; (EASTERN PROMISE) LAURYN ISHAK